

# AEC Collection: What's New in Revit 2020.2

**butic** THE NEW SCHOOL  
be different

 **AUTODESK.**  
Learning Partner

 **AUTODESK.**

# New Features and Enhancements

## Autodesk Revit 2020.2

### Platform

- ✓ Expose the Internal Origin of Revit Models
- ✓ Dynamo 2.3
- ✓ View Navigation Keyboard Control (WASD and Mouse Buttons) in Perspective Views
- ✓ Freeze Header in Schedules
- ✓ Highlight Active Row in Schedules

### Architecture

- ✓ Path of Travel Add and Edit Waypoints
- ✓ Full Path for BIM 360 Links

### MEP

- ✓ Edit Circuit/Panel Properties with Panel Schedule View

### Structure

- ✓ Dynamo Nodes for Steel Connections that Read Analysis Results
- ✓ Dynamo Nodes that Load Steel Connections from Libraries

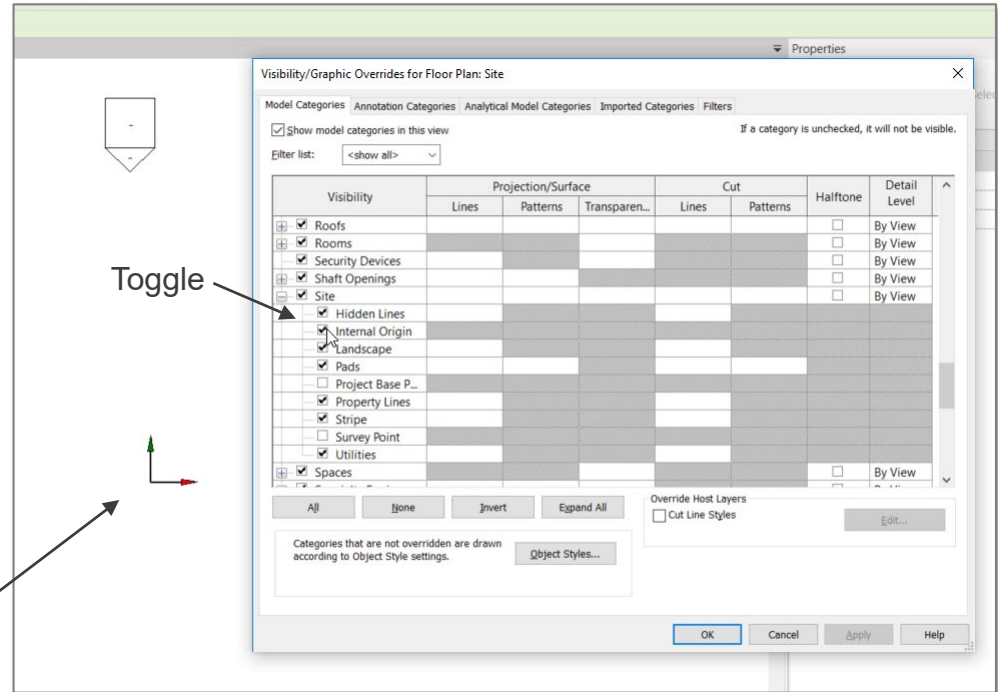
# Connect

## Autodesk Revit 2020.2

### Expose the Internal Origin of Revit Models

- Toggle visibility of internal origin point
- Review model positioning
- Refer to internal origin from linked Revit models for alignment

View internal origin point



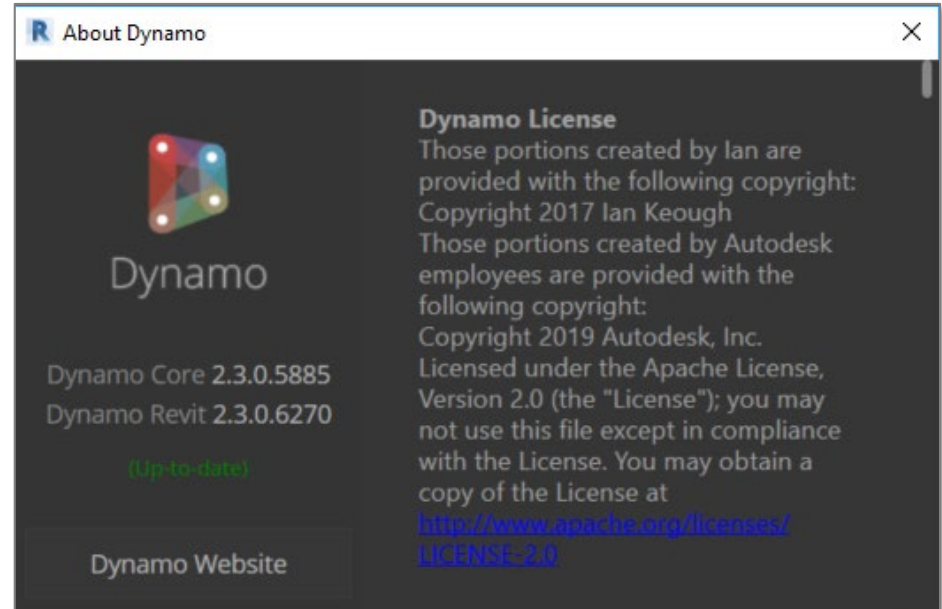
Easier to understand Revit coordinates for faster collaboration

# Connect

## Autodesk Revit 2020.2

### Dynamo 2.3

- New Surface Boolean Nodes
- Enhanced custom node in package controls to eliminate overwrite
- New missing package identification capabilities
- New preview state for features under development
- New note resizing capabilities
- New connector actions
- Improved performance with large lists



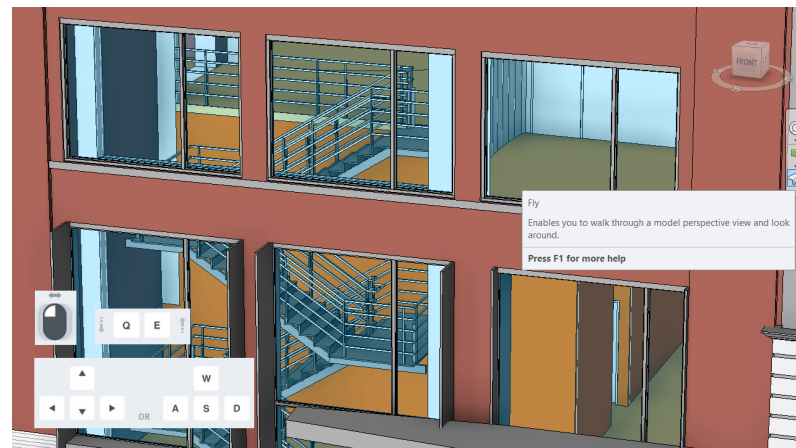
Improved stability, performance and usability

# Platform

## Autodesk Revit 2020.2

### View Navigation Keyboard Control (WASD and Mouse Buttons) in Perspective Views

- Start the Fly mode from the navigation bar
- Mouse pointer gets changed
- Use mouse buttons and keyboard shortcuts to navigate through the 3D model
- Look around the model
- Move up and down
- Adjust the navigation speed
  - Current speed is shown in the status bar



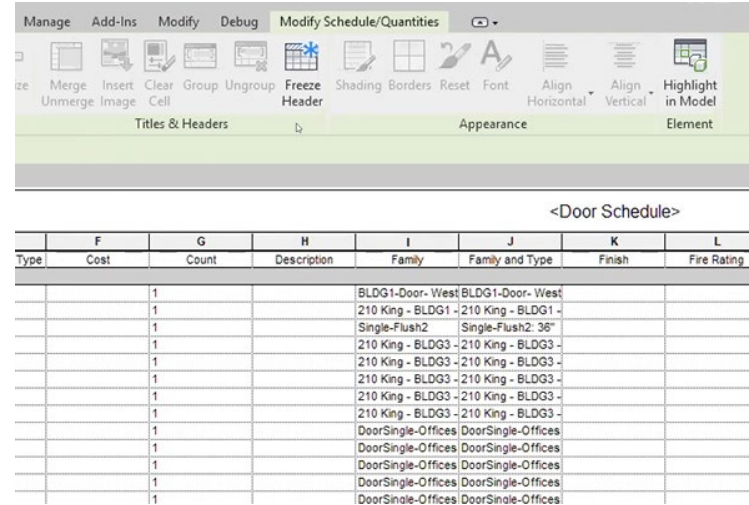
Explore your model with the Fly mode in a perspective view

# Platform

## Autodesk Revit 2020.2

### Freeze Header in Schedules

- New "Freeze Header" button available in the Ribbon
- Freeze the header to keep it visible when scrolling within a schedule
- Can be used to turn on/off the feature behavior



Keep the column header visible while scrolling in large schedules

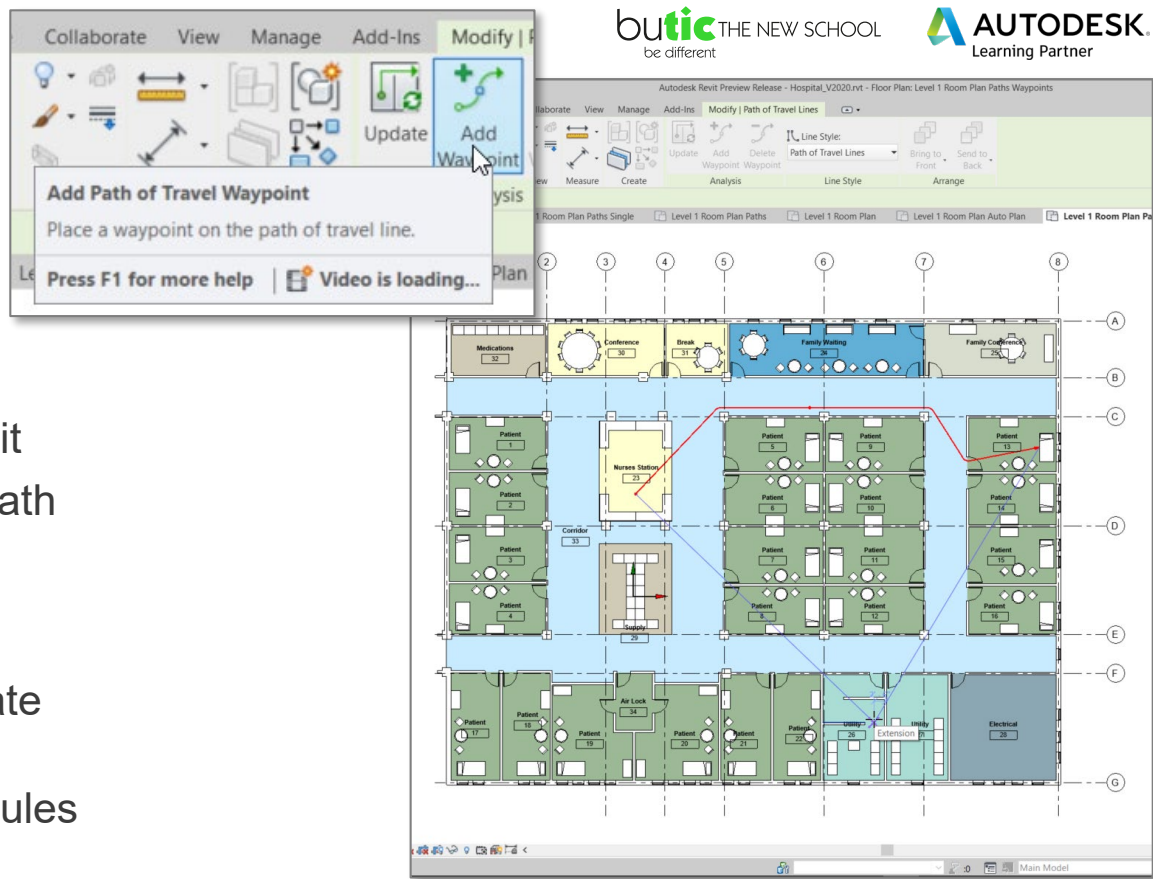


# Architecture

## Autodesk Revit 2020.2

### Path of Travel Add and Edit Waypoints

- Add and remove waypoints directly from the ribbon in Revit
- Remove a waypoint and the path will recalculate to the optimal route
- Drag a waypoint to a desired location and the path will update automatically
- Parameters in tags and schedules reflect the new analysis path



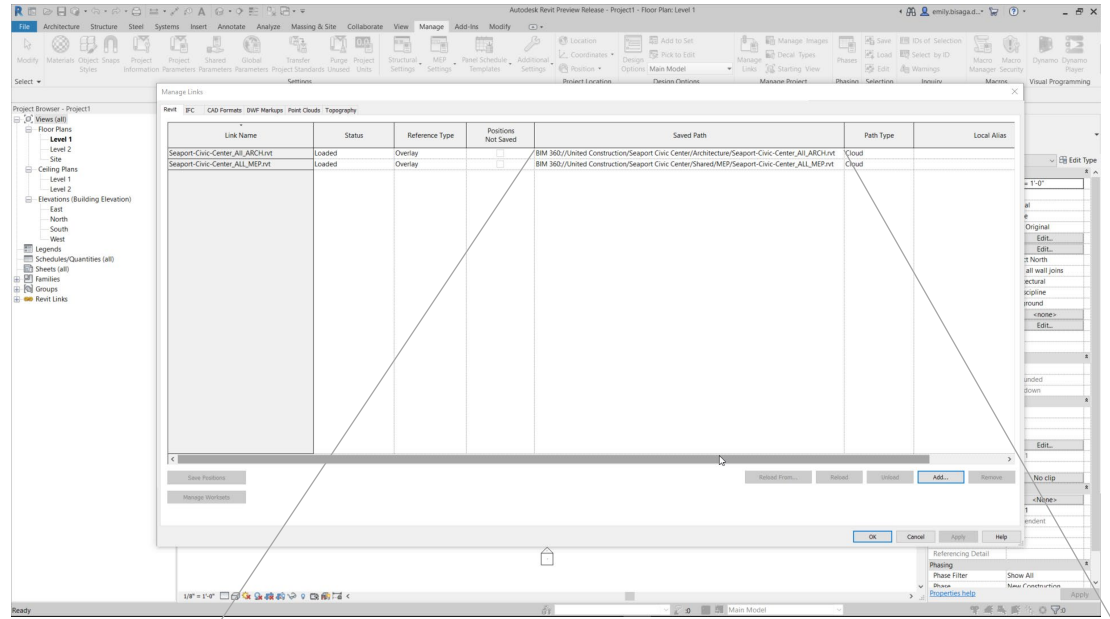
Improved control over route analysis for early stage design

# Architecture

## Autodesk Revit 2020.2

### Full Path for BIM 360 Links

- In manage links dialogue the full link path shows
- Easy to tell live-linking from consuming when using design collaboration



**Saved Path**

BIM 360://United Construction/Seaport Civic Center/Architecture/Seaport-Civic-Center\_All\_ARCH.rvt  
 BIM 360://United Construction/Seaport Civic Center/Shared/MEP/Seaport-Civic-Center\_All\_MEP.rvt

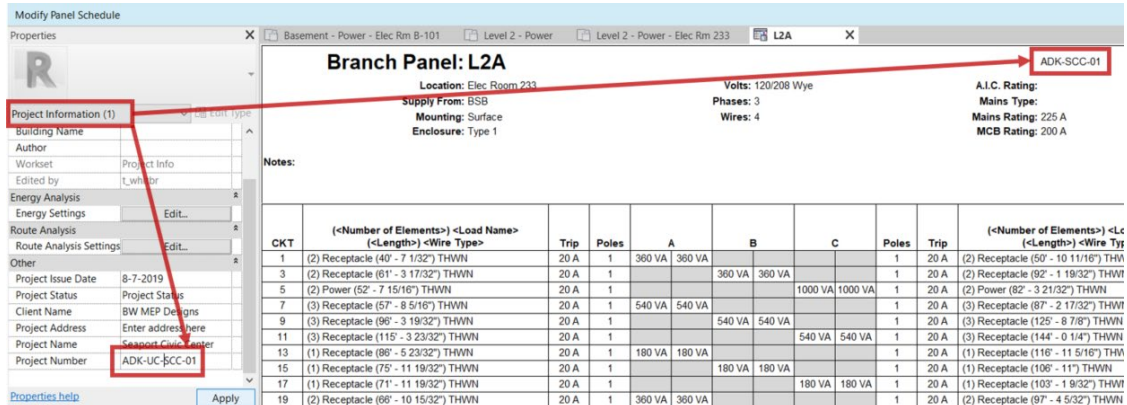
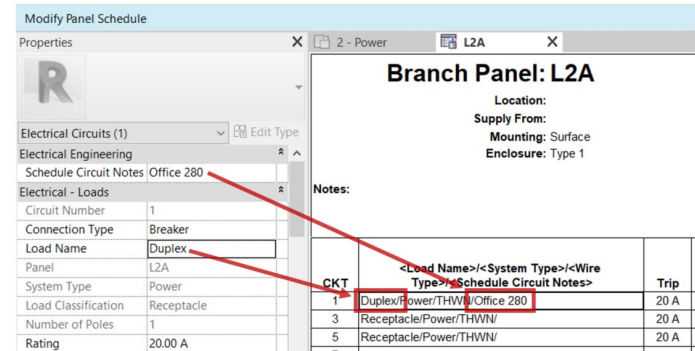
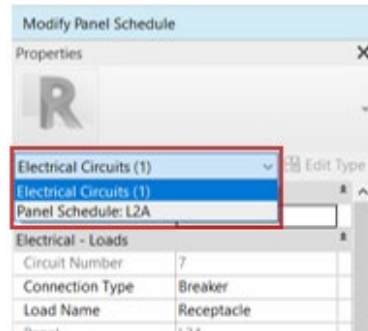
Improved control and clarity when linking files in Revit from BIM 360 Design

# Electrical

## Autodesk Revit 2020.2

### Edit Circuit and Panel in Panel Schedule View

- Switch between panel schedule and electrical circuit properties through the properties filter
- Modify combined parameters in the properties palette
- Modify project information placed in panel schedule from the panel schedule properties



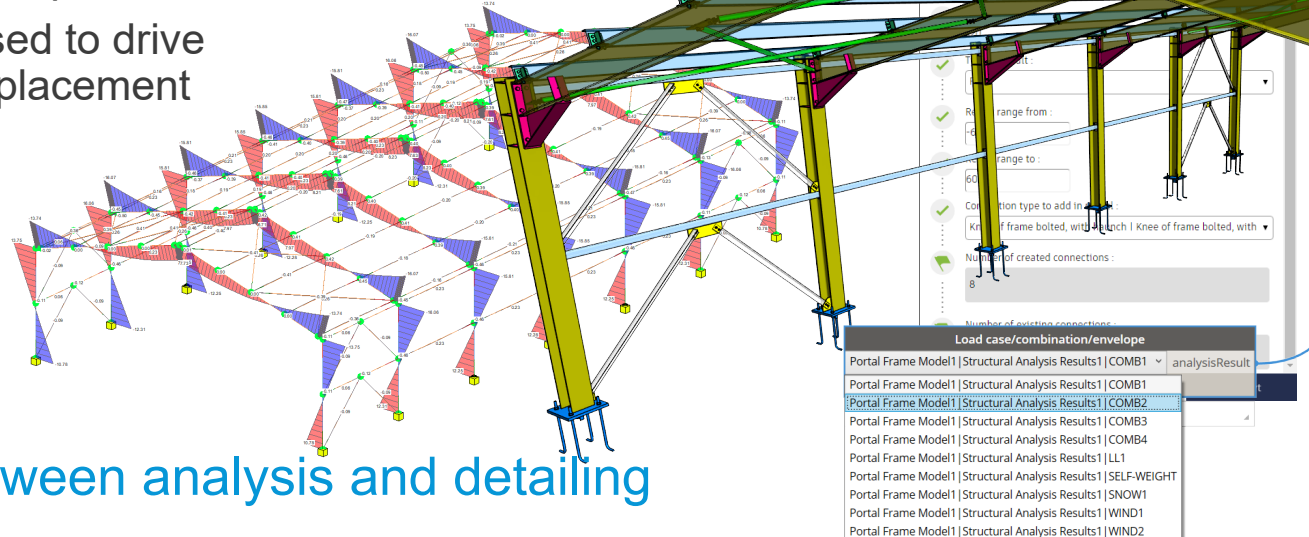
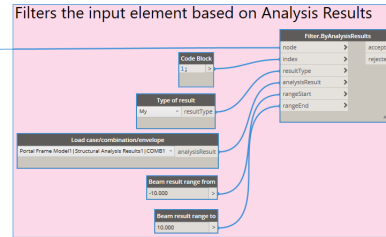
Panel Schedules contextually connected with elements

# Structure

## Autodesk Revit 2020.2, Autodesk Steel Connections Dynamo Package

### Dynamo Nodes for Steel Connections that Read Analysis Results

- Read analysis results for load cases, combinations and envelopes
- Analysis results are used to drive automatic connection placement
- Faster design iteration



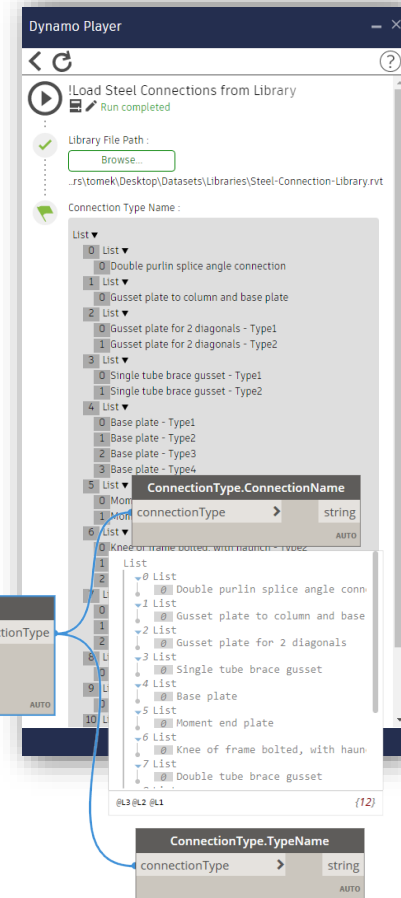
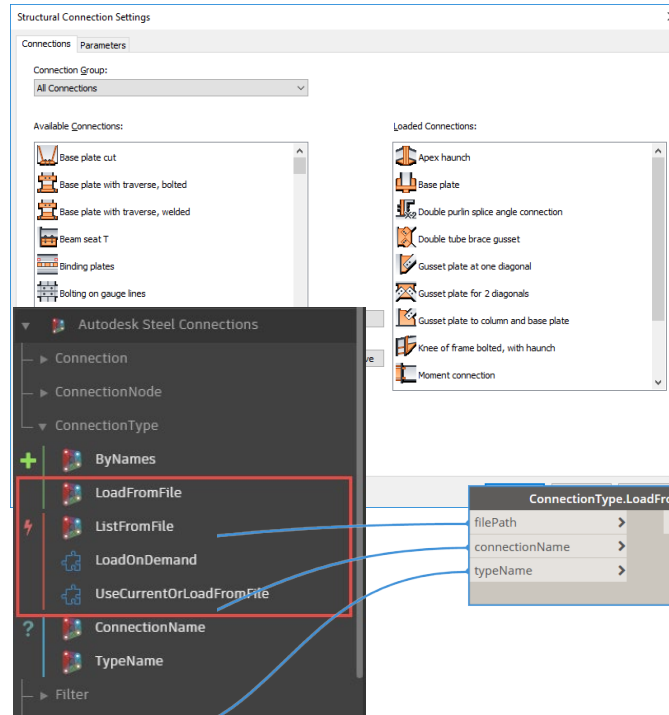
Greater connection between analysis and detailing

# Structure

## Autodesk Revit 2020.2, Autodesk Steel Connections Dynamo Package

### Dynamo Nodes that Load Steel Connections from Libraries

- Save libraries of connections as Revit project files
- New nodes for rule-based loading of connections from libraries
- Automatically load the required pre-configured connection types



Greater automation of modeling steel connections



# AUTODESK®

Make anything™

**butic** THE NEW SCHOOL  
be different

Formación Oficial de Autodesk

[www.butic.es](http://www.butic.es)